

Tarot Card Analysis pt 1

An indepth look into the tarot card and the quest locations on the Tree of Life.
By *Electra@wisdomsdoor.com*

© [copyright 2016 by Wisdomsdoor.com](http://www.wisdomsdoor.com)
<http://www.wisdomsdoor.com>

The Universe - The Crystal Palace



This location is all about energy. The central point to understand here is that essentially the Universe is you and the crystal in the card represents your world. That world is essentially a creation of yours, it is in effect your fantasy made real. It can be whatever you want it to be and when you look into that crystal it will reflect your creation back to you.

Notice the garland around the crystal, like a laurel wreath. This symbolizes credibility and worthiness, that your universe is something to be respected and treasured. It is also a reminder that your universe is both the Creator and the created and that therefore it is required to manifest the Creator's ethical and structural principles. We will find out more about this in the Judgement and the Moon cards and locations where we will learn more about how the universe is constructed both ethically and physically.

We will see how the creative principle is split into solar and lunar currents giving us a pair of opposites represented as right and left that branch out from the Crystal Palace into the Judgement and Moon locations where we are then initiated into how this universe of ours is constructed at progressively higher levels.

The Polarity of Singularity

The crystal in the Universe card represents a singularity, a completed universe. This can be interpreted at both the micro and the macro level. Micro because the crystal is a seed that represents the individual completed self in its most

contracted form and macro because it also represents the individual in its fully expanded form as a completed universe.

The crystal has two terminations or points, one at each end, one being a receiver and one being a transmitter. The completed self is a self-existing entity and yet it always exhibits the quality of polarity as this is the mechanism by which unique individuality is expressed be it at the micro or the macro level. Polarity is the great enabler of reality creation.

The polarity of the crystal enables it to act as a transformer giving it an infinite capacity to evolve and transform itself bringing to mind the alchemical maxim 'salve et coagula' which means "dissolve and reform". It means that something must be broken down before it can be built up and that it must be done repeatedly. In other words to arrive at the perfected individual, all mental content must be analyzed and broken down into its component parts and then be reformed by a continual process of experimentation and evaluation.

Note that the crystal at the Crystal Palace location is found underground. This is a very important point. The implication here is that the crystal of the perfected self is buried within the earth of mundane existence and has to be unearthed or 'exhumed' from obscurity. This brings to mind the alchemical anagram V.I.T.R.I.O.L. which is the alchemical motto 'Visita Interiora Terrae Rectificando Invenies Occultum Lapidem' which means 'Visit the interior of the earth and rectifying (purifying) you will find the hidden stone'. In other words go into the depths of your inner self and dig deep until you find your true nature, which is the philosopher's stone, your own inner wisdom.

Also note that while the crystal in the Universe card is double terminated, the crystal at the Crystal Palace is a sphere. The significance of this is that while the true singularity is spherical its inherent nature is one of duality, at both the physical and non-physical levels. (I find it significant that while digging in the garden the other day I dug up a spherical marble containing a double-ended inclusion).

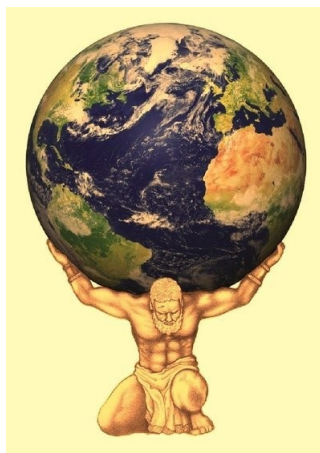
From this analysis of the symbolism of the crystal in the Universe card we can see that its nature is fundamentally dualistic, ie it is double terminated. We can therefore understand how it is that its polarity can be expanded into the polarity embodied in the Tree of Life.

It was noted that the hermetic figure in the Universe card of the Waite deck similarly demonstrates the decaying of the world of mundane duality (the two crumbling baton sticks, one in each hand) to reveal the perfected individual that embodies both the male and female principles.

NB Also note that when we get to the Resolution Point we will again encounter the idea of 'salve et coagula' in action as the hard core of inadequate and imperfect mental structures not fit for purpose are broken down to arrive at a new, revised and re-formed self.

Mythology

Atlas Shouldering the Weight of the Universe



Atlas was the Titan god of endurance and astronomy. In his various exploits he opposed the sky god Zeus in war and lost. The result was that he was tasked with holding up the universe as a punishment. This myth has echoes of the initial opposition many spiritual seekers feel to the mundane mindset of mass consciousness and how they end up suffering for it. They are often forced into having to rely extensively on their inner resources to make their inner and outer worlds work in the process discovering many skills and life principles unavailable to their less intelligent peers. Their 'burden' then becomes not only their life's work but also a necessity in order to complete their spiritual journey. In the end they become the authors of their own destiny and master's of their own creations, a world away from the unworkable creations of the mundane mindset.